



PRINCE Dr. K. VASUDEVAN COLLEGE OF ENGINEERING AND TECHNOLOGY

(Approved by AICTE, Affiliated to Anna University & ISO 9001:2015 Certified Institution)
Medavakkam-Mambakkam Main Road, Ponmar, Chennai-600127

STUDENT FEEDBACK ON SYLLABUS – ANALYSIS REPORT

Academic Year

2019-20

Department

Electronics and Communication Engineering

Number of Respondents

43

Rate the curriculum/ Syllabus on the following Points

S. No	Feedback on Syllabus	Strongly agree	Agree	Neutral	Disagree	Strongly Disagree
		5	4	3	2	1
1	Whether the syllabus is career oriented?	34	7	2	0	0
2	Whether the course was well structured to achieve course outcomes?	35	4	3	1	0
3	Rate the size of the syllabus in terms of student's load?	30	9	3	1	0
4	Whether the course objective is clear?	28	11	3	1	0
5	Are the books prescribed as a text book reference book in related to syllabus?	30	8	4	0	1
6	Whether the syllabus is relevant to real world problems?	27	13	2	1	0
7	Whether the syllabus is covered with industrial standards?	28	11	3	1	0
8	Is the syllabus in calculated necessary ethical values and concern for the society?	27	10	4	1	1

PRINCIPAL
PRINCE DR. K. VASUDEVAN COLLEGE OF
ENGINEERING AND TECHNOLOGY
PONMAR, CHENNAI-600127.



PRINCE Dr. K.VASUDEVAN COLLEGE OF ENGINEERING AND TECHNOLOGY

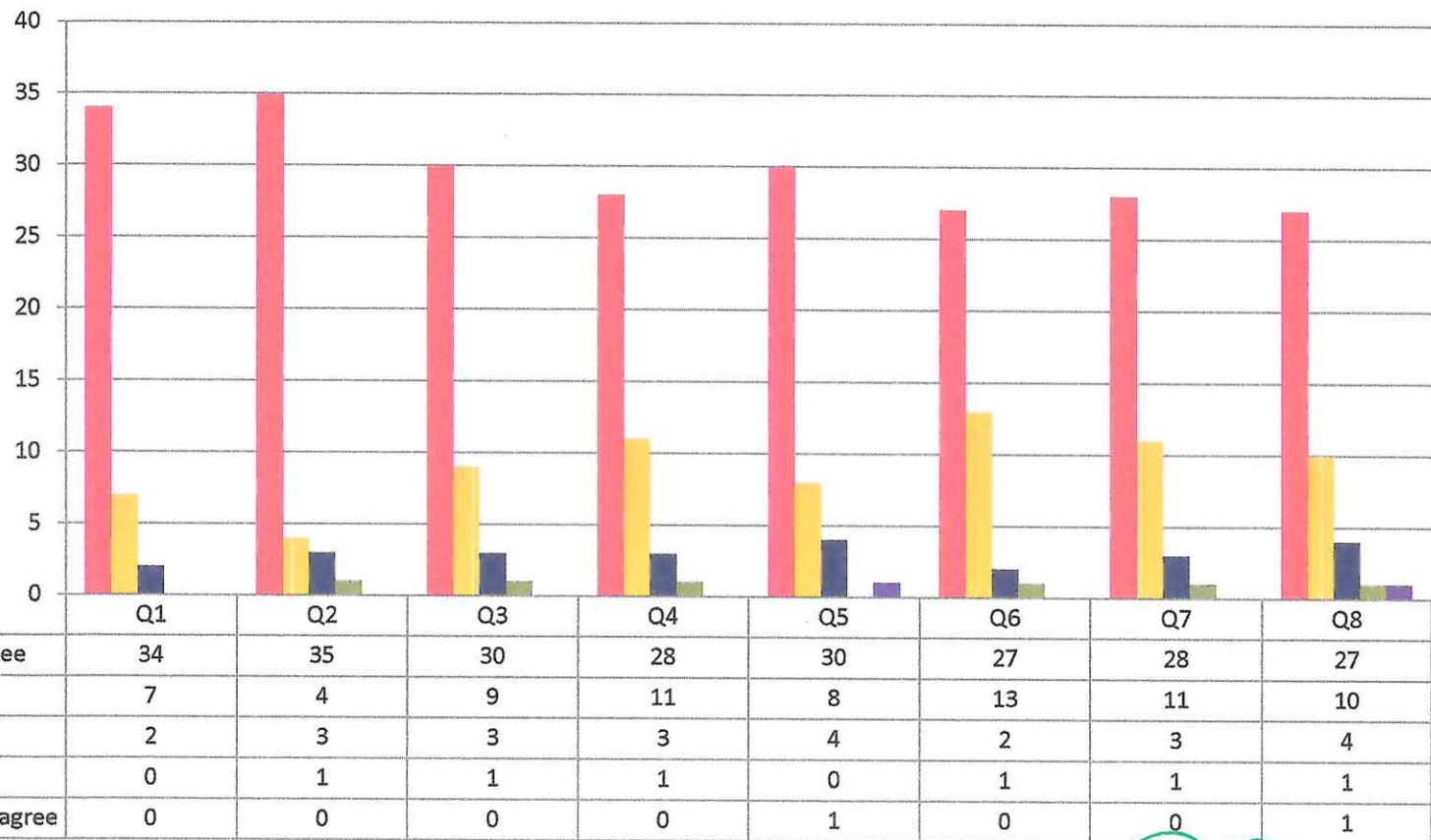
(Approved by AICTE, Affiliated to Anna University & ISO 9001:2015 Certified Institution)

Medavakkam-Mambakkam Main Road, Ponmar, Chennai-600127

STUDENT FEEDBACK ON SYLLABUS - 2019-2020

Electronics and Communication Engineering

(NUMBER OF RESPONDENTS - 43)



(Signature)

PRINCIPAL

**PRINCE DR. K. VASUDEVAN COLLEGE OF
ENGINEERING AND TECHNOLOGY
PONMAR, CHENNAI-600127**



PRINCE Dr. K. VASUDEVAN COLLEGE OF ENGINEERING AND TECHNOLOGY

(Approved by AICTE, Affiliated to Anna University & ISO 9001:2015 Certified Institution)

Medavakkam-Mambakkam Main Road, Ponmar, Chennai-600127

STUDENT FEEDBACK ON SYLLABUS – ANALYSIS REPORT

Academic Year

2019-20

Department

Computer Science and Engineering

Number of Respondents

63

Rate the curriculum/ Syllabus on the following Points

S. No	Feedback on Syllabus	Strongly agree	Agree	Neutral	Disagree	Strongly Disagree
		5	4	3	2	1
1	Whether the syllabus is career oriented?	36	22	3	1	1
2	Whether the course was well structured to achieve course outcomes?	38	21	2	1	1
3	Rate the size of the syllabus in terms of student's load?	39	22	1	1	0
4	Whether the course objective is clear?	38	20	4	1	0
5	Are the books prescribed as a text book reference book in related to syllabus?	40	19	3	1	0
6	Whether the syllabus is relevant to real world problems?	34	22	4	2	1
7	Whether the syllabus is covered with industrial standards?	37	24	1	1	0
8	Is the syllabus in calculated necessary ethical values and concern for the society?	37	21	4	1	0

PRINCIPAL
PRINCE DR. K. VASUDEVAN COLLEGE OF
ENGINEERING AND TECHNOLOGY
PONMAR, CHENNAI-600127.



PRINCE Dr. K. VASUDEVAN COLLEGE OF ENGINEERING AND TECHNOLOGY

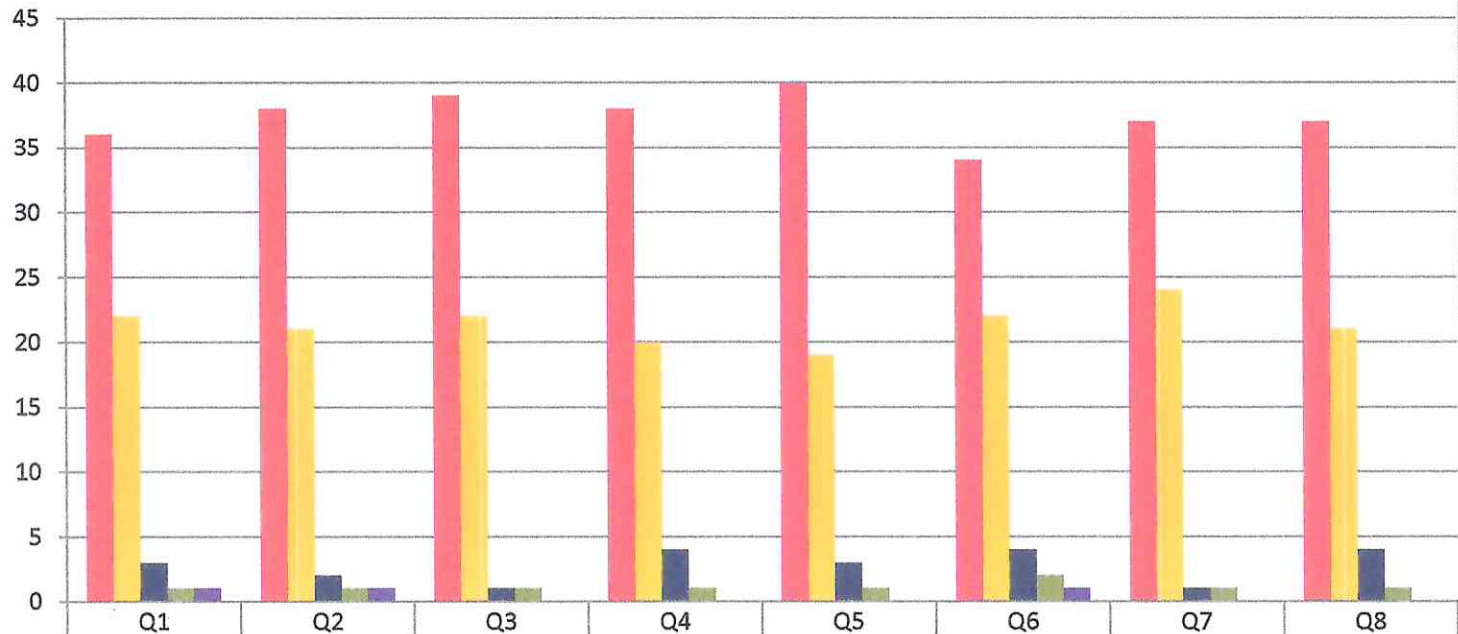
(Approved by AICTE, Affiliated to Anna University & ISO 9001:2015 Certified Institution)

Medavakkam-Mambakkam Main Road, Ponmar, Chennai-600127

STUDENT FEEDBACK ON SYLLABUS - 2019-2020

Computer Science and Engineering

(NUMBER OF RESPONDENTS - 63)



Strongly agree	36	38	39	38	40	34	37	37
Agree	22	21	22	20	19	22	24	21
Neutral	3	2	1	4	3	4	1	4
Disagree	1	1	1	1	1	2	1	1
Strongly Disagree	1	1	0	0	0	1	0	0

PRINCIPAL

**PRINCE DR. K. VASUDEVAN COLLEGE OF
ENGINEERING AND TECHNOLOGY
PONMAR CHENNAI-600127**



PRINCE Dr. K.VASUDEVAN COLLEGE OF ENGINEERING AND TECHNOLOGY

(Approved by AICTE, Affiliated to Anna University & ISO 9001:2015 Certified Institution)

Medavakkam-Mambakkam Main Road, Ponmar, Chennai-600127

STUDENT FEEDBACK ON SYLLABUS – ANALYSIS REPORT

Academic Year

2019-20

Department

Electrical and Electronics Engineering

Number of Respondents

8

Rate the curriculum/ Syllabus on the following Points

S. No	Feedback on Syllabus	Strongly agree	Agree	Neutral	Disagree	Strongly Disagree
		5	4	3	2	1
1	Whether the syllabus is career oriented?	6	1	1	0	0
2	Whether the course was well structured to achieve course outcomes?	5	2	0	0	1
3	Rate the size of the syllabus in terms of student's load?	7	1	0	0	0
4	Whether the course objective is clear?	5	2	0	1	0
5	Are the books prescribed as a text book reference book in related to syllabus?	5	1	1	0	1
6	Whether the syllabus is relevant to real world problems?	6	2	0	0	0
7	Whether the syllabus is covered with industrial standards?	6	1	0	1	0
8	Is the syllabus in calculated necessary ethical values and concern for the society?	7	1	0	0	0



PRINCE Dr. K. VASUDEVAN COLLEGE OF ENGINEERING AND TECHNOLOGY

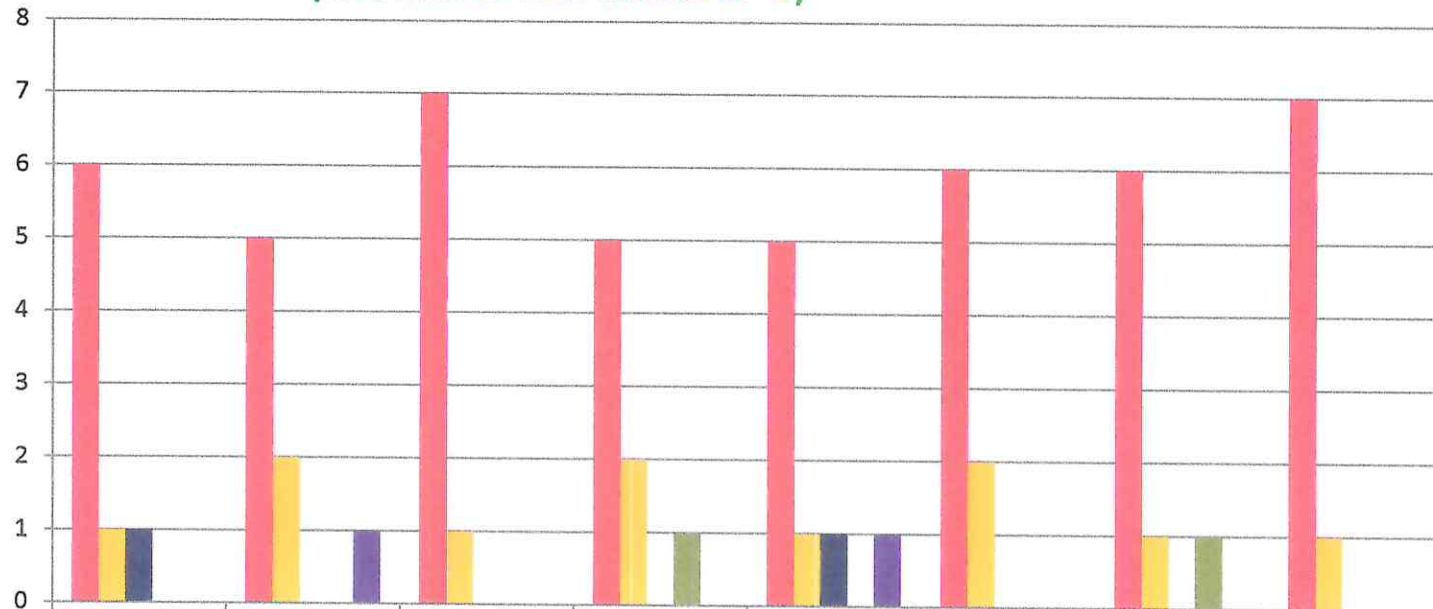
(Approved by AICTE, Affiliated to Anna University & ISO 9001:2015 Certified Institution)

Medavakkam-Mambakkam Main Road, Ponmar, Chennai-600127

STUDENT FEEDBACK ON SYLLABUS - 2019-2020

Electrical and Electronics Engineering

(NUMBER OF RESPONDENTS - 8)



	Q1	Q2	Q3	Q4	Q5	Q6	Q7	Q8
Strongly agree	6	5	7	5	5	6	6	7
Agree	1	2	1	2	1	2	1	1
Neutral	1	0	0	0	1	0	0	0
Disagree	0	0	0	1	0	0	1	0
Strongly Disagree	0	1	0	0	1	0	0	0

D. Srinivas
PRINCIPAL

PRINCE DR. K. VASUDEVAN COLLEGE OF
ENGINEERING AND TECHNOLOGY
PONMAR, CHENNAI-600 127,



PRINCE Dr. K. VASUDEVAN COLLEGE OF ENGINEERING AND TECHNOLOGY

(Approved by AICTE, Affiliated to Anna University & ISO 9001:2015 Certified Institution)

Medavakkam-Mambakkam Main Road, Ponmar, Chennai-600127

STUDENT FEEDBACK ON SYLLABUS – ANALYSIS REPORT

Academic Year 2019-20
Department Mechanical Engineering
Number of Respondents 48

Rate the curriculum/ Syllabus on the following Points

S. No	Feedback on Syllabus	Strongly agree	Agree	Neutral	Disagree	Strongly Disagree
		5	4	3	2	1
1	Whether the syllabus is career oriented?	32	12	2	1	1
2	Whether the course was well structured to achieve course outcomes?	34	10	2	1	1
3	Rate the size of the syllabus in terms of student's load?	29	17	1	1	0
4	Whether the course objective is clear?	31	12	4	1	0
5	Are the books prescribed as a text book reference book in related to syllabus?	28	16	3	1	0
6	Whether the syllabus is relevant to real world problems?	30	13	4	0	1
7	Whether the syllabus is covered with industrial standards?	36	10	1	1	0
8	Is the syllabus in calculated necessary ethical values and concern for the society?	30	13	4	1	0

PRINCIPAL
PRINCE DR. K. VASUDEVAN COLLEGE OF
ENGINEERING AND TECHNOLOGY
PONMAR, CHENNAI-600127



PRINCE Dr. K. VASUDEVAN COLLEGE OF ENGINEERING AND TECHNOLOGY

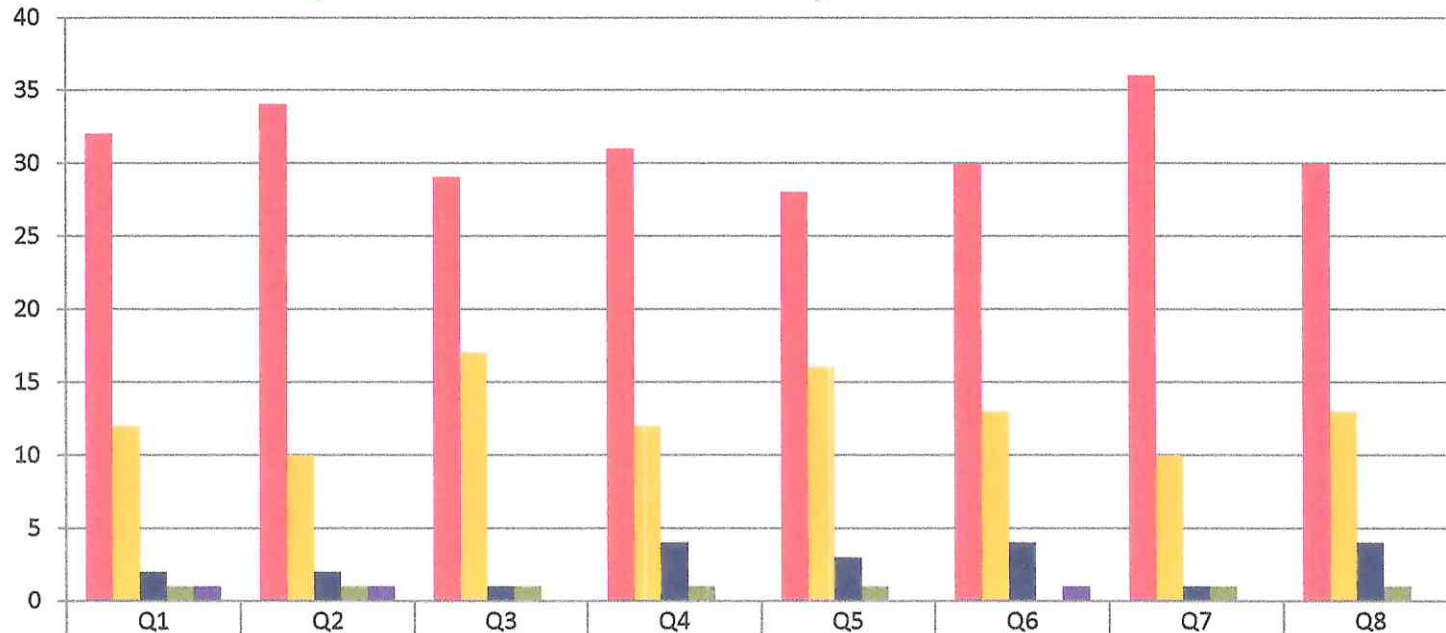
(Approved by AICTE, Affiliated to Anna University & ISO 9001:2015 Certified Institution)

Medavakkam-Mambakkam Main Road, Ponmar, Chennai-600127

STUDENT FEEDBACK ON SYLLABUS - 2019-2020

Mechanical Engineering

(NUMBER OF RESPONDENTS - 48)



Strongly agree	32	34	29	31	28	30	36	30
Agree	12	10	17	12	16	13	10	13
Neutral	2	2	1	4	3	4	1	4
Disagree	1	1	1	1	1	0	1	1
Strongly Disagree	1	1	0	0	0	1	0	0

(Handwritten Signature)

PRINCIPAL

PRINCE DR. K. VASUDEVAN COLLEGE OF ENGINEERING AND TECHNOLOGY
POMMAR, CHENNAI-600127